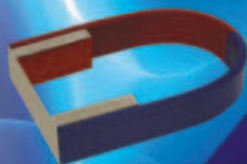




BEL
Labtronic



General Catalog

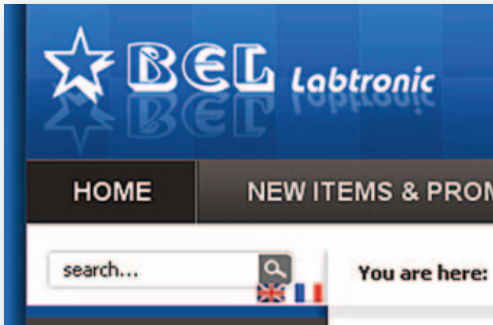
English / Français

www.bellabtronic.com



40 years of lab experience ...
clicks away!

www.bellabtronic.com

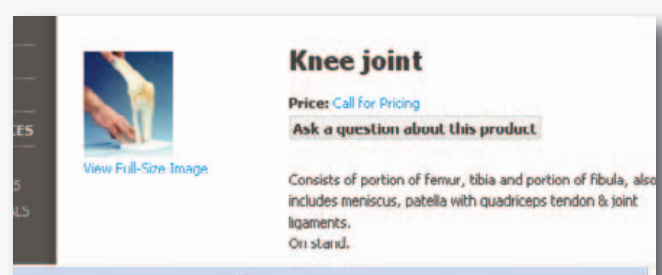


Nouveaux critères:

1. Choisir entre version Française ou Anglaise
2. Moteur de recherche: - par catégorie
- par article
- par mot
- par référence
3. Enregistrement de vos données personnelles pour devenir membre et vous permettre:
- d'envoyer les bons de commande et recevoir des offres occasionnelles.
- de recevoir les nouveautés de nos catalogues et produits.
- de faire des téléchargements.

New Features in BEL Labtronic's new website:

1. Toggle between English or French version.
2. Search engine: - by category
- by item
- by word
- by reference
3. Register and Login:
By filling your information, you will be able to:
- send orders and receive occasional promotions
- receive products updates
- download



EDITO

Dear valued customer,

It is with great pleasure that we invite you to surf the pages of our 12th edition catalog.

Since 1969 we have operated with the strong determination of making a difference in science education.

To achieve this, we have set up our R&D department, production facility and trade team. With our whole activities ISO 9001 certified, we are able to offer you a full range of products and services in accordance with the most stringent quality standards.

Quality is our watch-word; from the quality of our products, through the quality of our services, to customer response and customer care. Fast delivery is a top priority. We maintain a large stock of finished products ready for dispatch at BEL Labtronic 1400 m² warehouse.

For more than forty years we have appreciated working with you, and we are looking forward to cooperating with you for many years to come. It is loyal customers like you who urge us to strive for the best.

Yours truly,



Georges Hatem
General Manager

Quality Standards

BEL Labtronic is the first major Lebanese supplier to be ISO 9001 certified, for the whole of its laboratory supply activities: design, production, distribution and trade of laboratory supplies and computer assisted educational equipment.

Our certification gives customers confidence that a third party (Moody Certification France) has audited us, checking how BEL Labtronic organises and improves its processes and the human/technical factors that could affect quality. It means that our customers can be sure that the products and services we offer are of consistent quality, reducing the need for customers' audits.

Our goal is to maintain the highest quality standards for our customers.

One of the cornerstones of our business is the determination to give all our customers the best value for money. To us this means the widest choice of products competitively priced, exceptional levels of services, a range of added value activities and assurances, all of which make us your number one choice for all your laboratory requirements.



An ISO 9001

Certified Company

Our policy is to ensure customer satisfaction through Excellent and Fast service and a wide variety of products with the best value for money.

In order to achieve our policy, we strive to reach the following objectives:

- Maximizing employees competence through recruitment and training.
- Use the best tools and equipment and continuously maintain them.
- Follow the best methods and procedures.
- Maintain an adequate work environment.
- Manage our processes and continuously improve our Quality Management System according to ISO 9001:2008 requirements.

We are committed to realize our policy through providing the right resources and continuously monitoring the achievement of objectives.



BEL Labtronic est le premier fournisseur Libanais à être certifié ISO 9001 depuis Août 2004, pour l'ensemble des ses activités : conception, production, distribution et commerce d'équipements de laboratoires. Ce label récompense notre démarche qualité et valide toutes nos méthodes et processus de la conception des produits jusqu'au service après-vente.

Etre certifié c'est pour vous la certitude que les méthodes en vigueur dans la société BEL Labtronic visent à vous satisfaire.



250m² showrooms for a better choice
Nous attendons votre visite

Showroom:
HATEM bldg. - Bedran street - Mansourieh - Metn
LEBANON
Monday to Friday: from 8 am till 4 pm

Salle d'exposition:
Imm. HATEM - Rue Bedran - Mansourieh - Metn
LIBAN
Ouverture: Du Lundi au Vendredi, de 8h à 16h



Visit our premises at Mansourieh to benefit from our special offers.

Bénéficiez de nos offres spéciales pour tout achat effectué auprès de notre siège à Mansourieh.

CD catalog / Catalogue sur CD:

Updated catalogs on CD, ask for your personal copy.

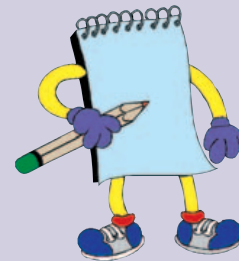
Les catalogues BEL sur CD sont régulièrement mis à jour.
Demandez votre copie.



General catalog / *Catalogue général*
English / Français



Laboratory Catalog
English / Français



Send us your order by phone, fax or mail



Occasional discounts don't miss them!

FAST

Fast delivery



Tel: +961 4 400006



Fax: +961 4 409215



Worldwide delivery



e-mail: bel@bellabtronic.com
website: www.bellabtronic.com



- Industrial laboratories / *Laboratoires industriels*
- Health laboratories / *Laboratoires de santé*
- Research centers / *Centres de recherches*
- Education / *Éducation*
- Agriculture and food industries / *Industries agricoles et alimentaires*
- Wine industry / *Industrie vinicole*
- Printing Press / *Imprimeries*
- Environment / *Environnement*

**The board of directors is ready for any assistance:
L'équipe de direction à votre écoute:**



Georges Hatem

General Manager

georges.hatem@bellabtronic.com



Hala Andraos

*Research & Development
Manager*

hala.andraos@bellabtronic.com



Jamil Hatem

*Production & Quality
Manager*

jamil.hatem@bellabtronic.com



Rania Maroun

Operations Manager

rania.maroun@bellabtronic.com



Nada Abboud

Marketing Manager

nada.abboud@bellabtronic.com

**All year long training courses:
Stages de formation tout au long de l'année:**



Technology training



Science training

**For your laboratories
Pour vos laboratoires**

DES ÉTUDES ET PROPOSITIONS SUR MESURE
Études, descriptifs et plans détaillés avec devis livrés en moins de 7 jours.

DES SERVICES EXCELLENTS

Assistance technique et commerciale gratuite, service après vente, service écoute clients.

DES INSTALLATIONS GARANTIES

Le mobilier BEL est garanti pour 2 ans.

UN SYSTÈME QUALITÉ CERTIFIÉ

Le système qualité de BEL Labtronic est conforme aux normes ISO 9001:2008

DES FONDATIONS SOLIDES

qui font de BEL Labtronic votre premier fournisseur avec le meilleur rapport qualité/prix.



Faites confiance à notre équipe:

Notre longue expérience est un compromis permanent entre le savoir-faire et la modernité, dont les principaux garants sont: un personnel compétant, des investissements réguliers en Recherche et Développement et une vitesse de service étonnante.

Notre structure nous permet de répondre dans des délais très courts à vos questions de tout ordre, nos représentants sont présents sur tout le territoire Libanais. Nous réalisons des offres de prix personnalisées pour vos projets; nos conseillers techniques sont disponibles sur simple appel et des listes types d'équipement sont à votre disposition pour vous guider dans le choix de votre matériel.

Standards conditions of sale

1. General

The following general conditions apply to all quotations, order confirmations, goods sold, services and advice rendered. Any special conditions required by customers, must be accepted in writing by BEL Labtronic.

2. Specifications

Specifications for all products are available in the catalogue. Minor changes in specifications may occur without prior notice. All variations to the standard specifications requested by customers, will only be binding following our confirmation in writing.

3. Orders

Orders should be placed or confirmed in writing, clearly identifying all special requirements. Orders by e-mail or over the phone will be confirmed in writing by us.

4. Prices

Unless otherwise agreed the price of the goods shall be that given in our price offer. Free Delivery on Lebanese grounds is offered for all orders exceeding US\$ 250.00. Deliveries outside Lebanon are quoted on the door-to-door basis by fast courier.

5. Delivery

Times quoted for delivery are to be treated as minimal times. The exact date of delivery shall be agreed-on for every purchase. The time of delivery shall be extended by a reasonable period if delay in delivery is caused by anything beyond our reasonable control.

6. Return of goods

Return of goods will only be accepted within 72 hours of order reception. Returned goods should be unused and in the same delivery conditions.

Return of customised goods will not be accepted.

Return of goods is not applicable for deliveries outside Lebanon.

7. After sales services

After sales services are available for all goods supplied by BEL Labtronic.

* BEL trademark products benefit from a 2-year warranty against all fabrication defects.

Technical support is available for all your laboratory instruments.

Please refer to our 5-star services for more details (page 190).

8. Assistance

Vocational courses for our customers are available free of charge at BEL Labtronic premises.

Technical assistance over the phone is available, Monday to Friday, from 8 am till 4 pm.

BEL Labtronic assistance is available outside Lebanon upon request, and shall be quoted on request.

9. Payment terms and conditions

Terms and conditions of payment shall be expressed and confirmed in writing on all price offers and order confirmations. Payment terms and conditions may not be changed without our prior written agreement. We shall have the right to postpone delivery or cancel or amend an order wholly or partially without any liability if we have reason to believe that payment would not be forthcoming.

Over Lebanese grounds, payments are accepted cash or by cheques. Cheques shall be done for the name of BEL Labtronic.

10. BEL Labtronic is an ISO 9001:2008 certified company. For any quality related issues please contact our quality management department on qms@bellabtronic.com